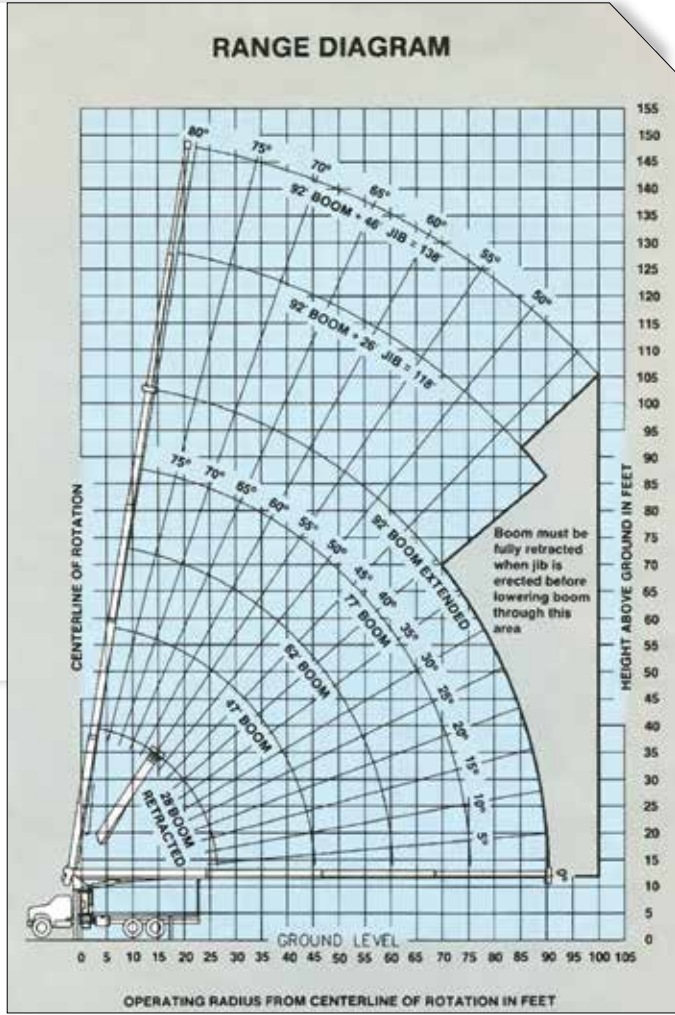


**NOW AVAILABLE**



**2592 Boom Truck/25 ton**



The Manitex 2592 includes a 4-section, 92' boom with anti-two-block warning and shutdown system; two-speed hydraulic winch with 300' of 9/16" wire rope and overhaul ball; rotation bearing and swing system; hydraulic fluid; turret; boom luffing cylinder; pedestal with outriggers; control console with operator platforms; sub-frame; rear stabilizers, boom rest and load moment indicator.

**Manufacturer** Manitex  
**Model** 2592  
**Condition** Used  
**Year** 1996  
**Location** Harrison, OH USA  
**Capacity** 25 ton  
**Wire Rope Size** 9/16 in  
**Boom** Telescopic  
**Engine** Diesel  
**Jib** 46 ft  
**Jib Capacity** 3,400 lb  
**Power** Cummins M11

**RENTAL RATE:**  
**\$6,480/MONTH**  
**\$2,160/WEEK; \$720/DAY**

**RENTAL NUMBER:**  
**R.CRN.MAN.2592.26795**

**SERIAL NUMBER:**  
**26795**

**SALES**

**SERVICE**

**RENTAL**

**PARTS**

Toll-Free: 1.800.333.2151  
 World-Wide: 1.513.367.2151  
[www.fmmafco.com](http://www.fmmafco.com)

